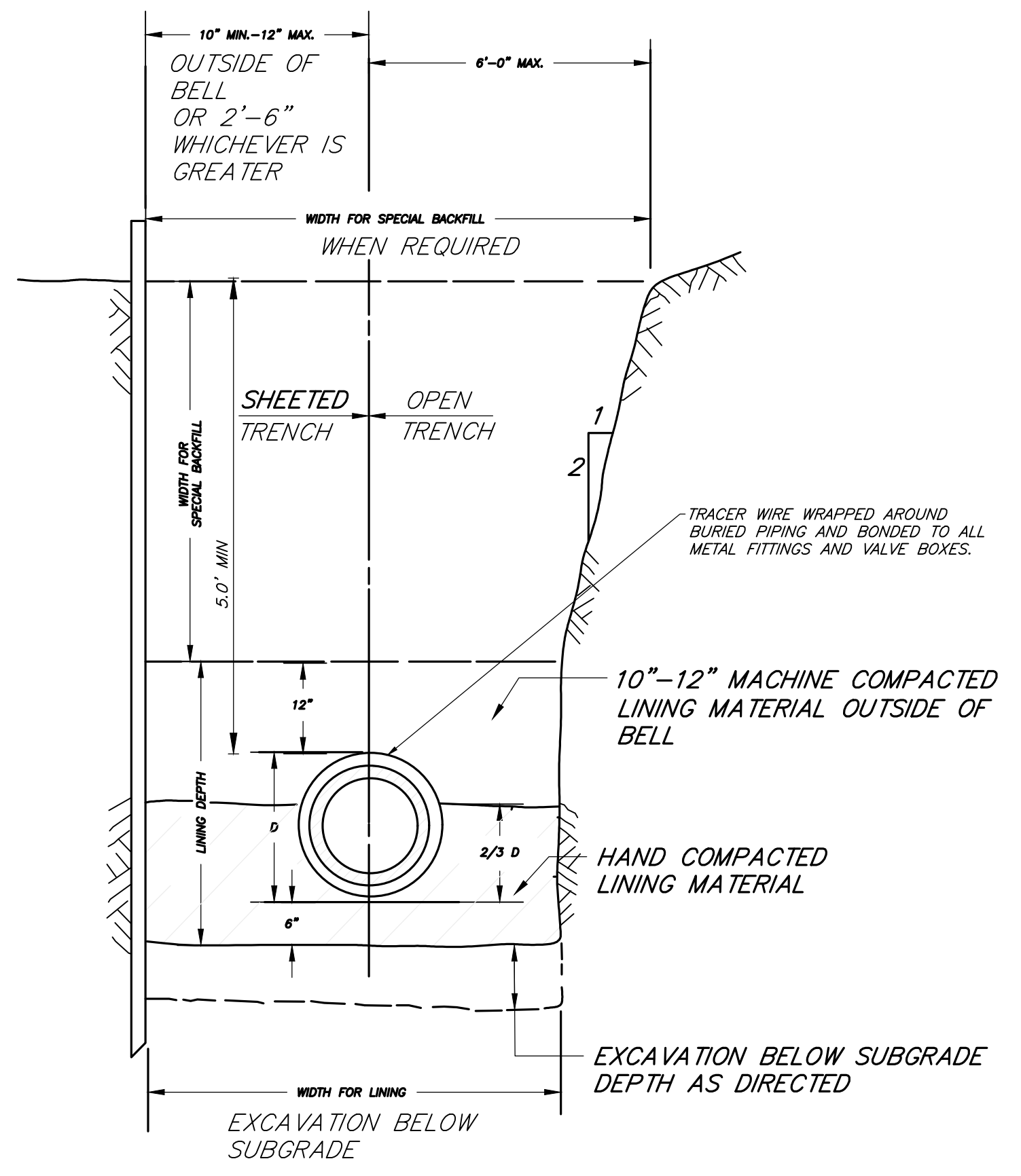
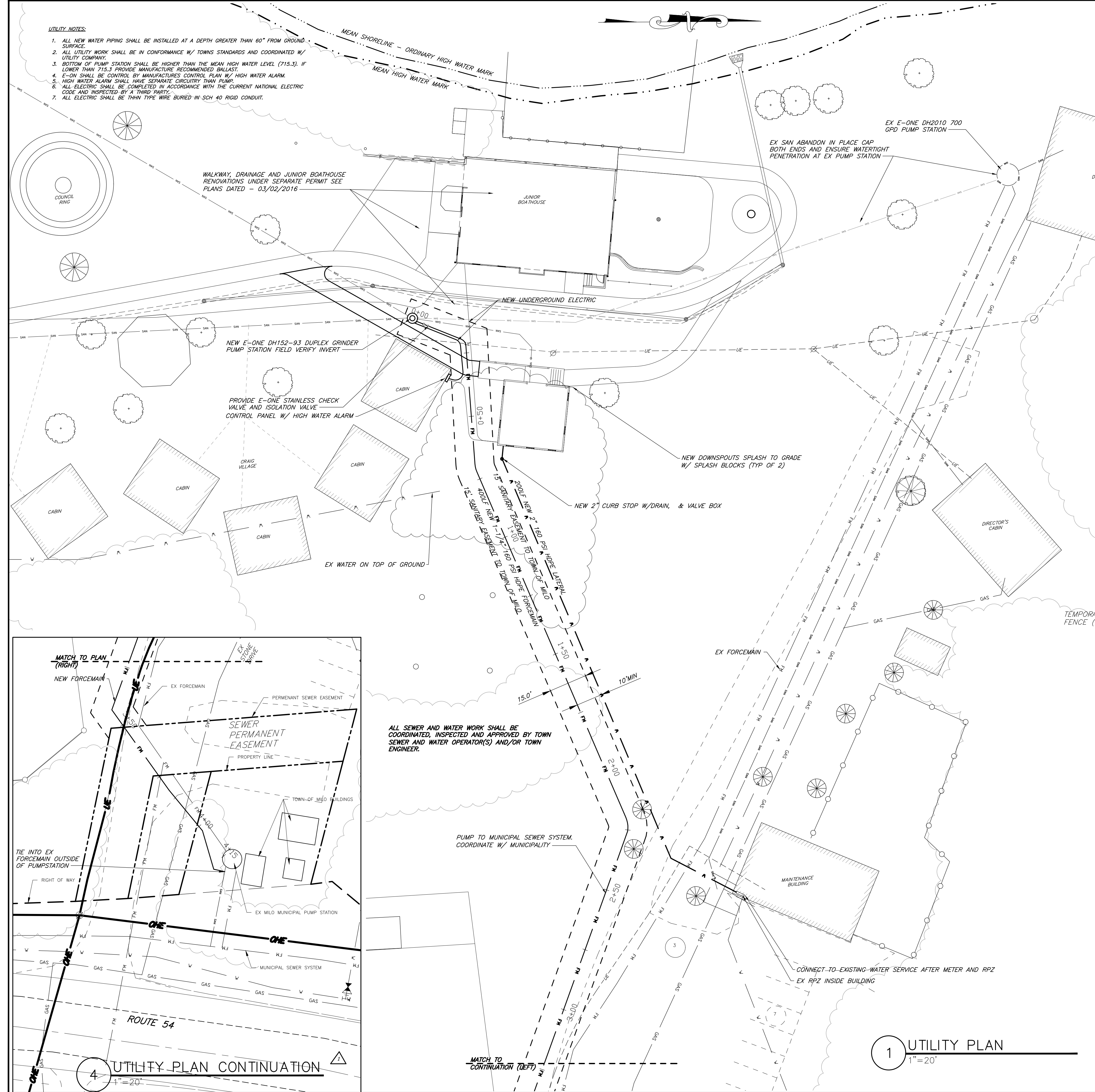
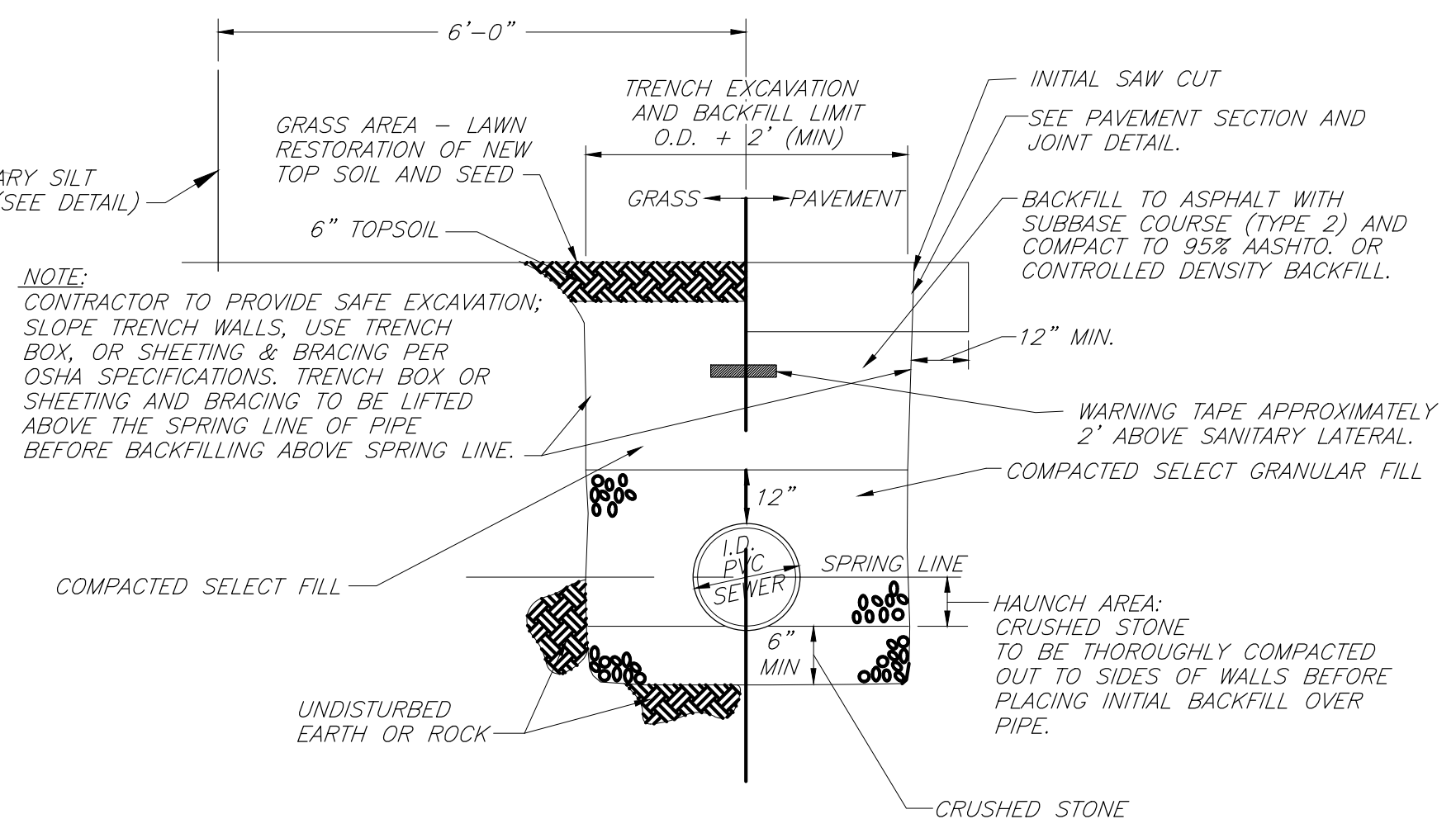


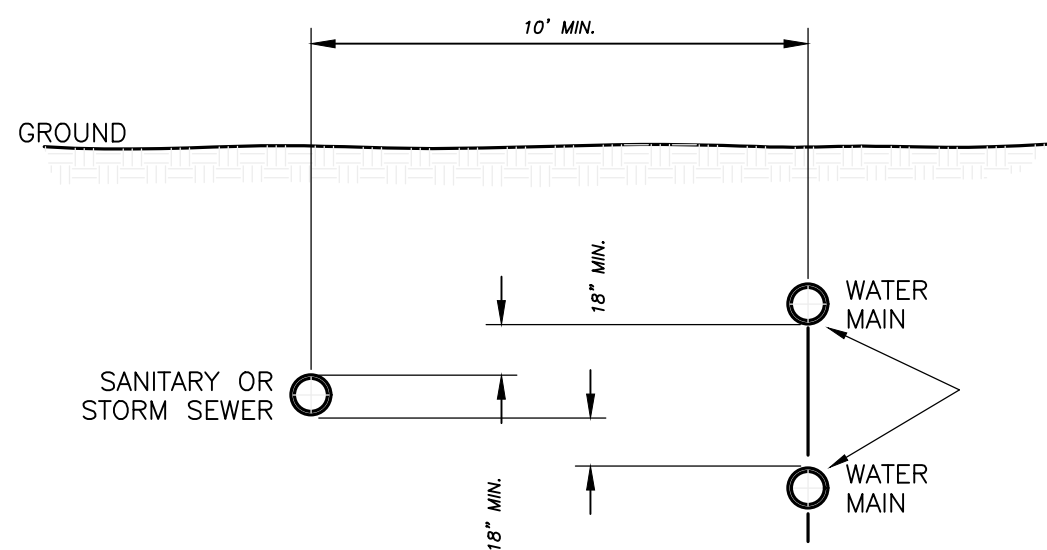
- UTILITY NOTES:**
1. ALL NEW WATER PIPING SHALL BE INSTALLED AT A DEPTH GREATER THAN 60" FROM GROUND SURFACE.
 2. ALL UTILITY WORK SHALL BE IN CONFORMANCE W/ TOWNS STANDARDS AND COORDINATED W/ UTILITY COMPANY.
 3. BOTTOM OF PUMP STATION SHALL BE HIGHER THAN THE MEAN HIGH WATER LEVEL (715.3), IF LOWER THAN 715.3 PROVIDE MANUFACTURE RECOMMENDED BALLAST.
 4. E-ON SHALL BE CONTROL BY MANUFACTURE CONTROL PLAN W/ HIGH WATER ALARM.
 5. HIGH WATER ALARM SHALL HAVE SEPARATE CIRCUITRY THAN PUMP.
 6. ALL ELECTRIC SHALL BE COMPLETED IN ACCORDANCE WITH THE CURRENT NATIONAL ELECTRIC CODE AND INSPECTED BY A THIRD PARTY.
 7. ALL ELECTRIC SHALL BE THIN TYPE WIRE BURIED IN SCH 40 RIGID CONDUIT.



2 **DETAIL: WATERLINE & FOREMAIN TRENCH**
NOT TO SCALE



3 **GRAVITY SEWER AND LATERAL TRENCH DETAIL**
N.T.S.



5 **DETAIL: WATERLINE RELATIONSHIP TO SEWERS**
NOT TO SCALE

1 **UTILITY PLAN**
1"=20'

4 **UTILITY PLAN CONTINUATION**
1"=20'



REVISIONS AND APPROVALS

NO.	DATE	DESCRIPTION OF REVISION OR APPROVAL	BY
1	1/17/2017	PERNIXIS DDCI AND NYS EDCI REVIEW	RAM
2	1/26/2017	LUNGTUNED RAMP & RAISED RAILING PER ARCH PLANS	RAM
3	1/31/2017	REMOVED PER LUNGTUNED DESIGN GROUP COMMENTS	RAM
4	02/27/2017	CHANGED TO EASEMENT	RAM

ADDITIONS AND ALTERATION
NEW BATHROOMS - YMCA CAMP CORY
SHOWING LAND IN:
140 EAST LAKE ROAD ROUTE 54
TOWN OF MILO
STATE OF NEW YORK
COUNTY OF Yates

DRAWING TITLE
UTILITY PLAN

DRAWN BY:	DRW
DESIGNED BY:	BAM
CHECKED BY:	BAM
SCALE:	AS NOTED
JOB NO.:	15-029-2
DATE:	12/09/2016
TAX MAP#:	61.03-1-1.1

C200